



There's *More* To Life





## EXPRESS ASTRA

Life here is more than just about convenience and comfort; it is the ultimate bliss of living to the fullest. Project Express Astra is an epitome of good living where the elements of nature are perfectly amalgamated with Vastu Shastra.

Express Astra is a complete life experience. Here 'Panch Tattva – The Essence Of Life' forms the foundation of an incredible lifestyle. Together Earth, Fire (Light), Space, Air and Water are the foundations of living life full of joy and ecstasy. It offers everything you need to live an elevated lifestyle, including ample greenery, good ventilation, beautiful water bodies, clean environment and abundant space.

With grand architecture and world-class facilities, living here will fill your life with freshness, vibrancy, prosperity, love and leisure.





There's  
*More*  
To Life

At Express Astra, Pancha Tattva is the basis of life. In Indian culture, 'Pancha Tattva' represents 'the five great elements' from which life arises. They are crucial for a balance between our internal and external environment. Express Astra accommodates every element that nature has blessed us with whilst keeping up with the teachings of Vaastu Shastra to facilitate a blissful life.

Adding "More To Life", Express Astra exudes profusion of every element in life.



EXPRESS  
ASTRA



EARTH



WATER



FIRE



AIR



SPACE



EXPRESS  
ASTRA





# Earth

is the life bearer which represents a solid state - the soil, flora and fauna.

## More Verdure

A harmonization of Nature and Modern Living, Express Astra boasts of beauty and bliss. The expanse of greenery in and around Express Astra enhances the living experience with fresh air.

---

Vaastu compliant layout

---

Signature orchard with seating

---

Beautiful landscaped garden

---

75% open green area

---

Central landscaped greens with flower beds











# Water

is the driving force of nature. It has a purifying force which keeps us in spirit.

## More Sparkle

Water is crucial for our existence, it is an everlasting source of inspiration to become versatile and fluid with limitless boundaries.

Our Swimming Pool and Fountain add a sense of bliss to the landscape, whilst becoming a perfect escape spot from the mundane life in quest of joy.

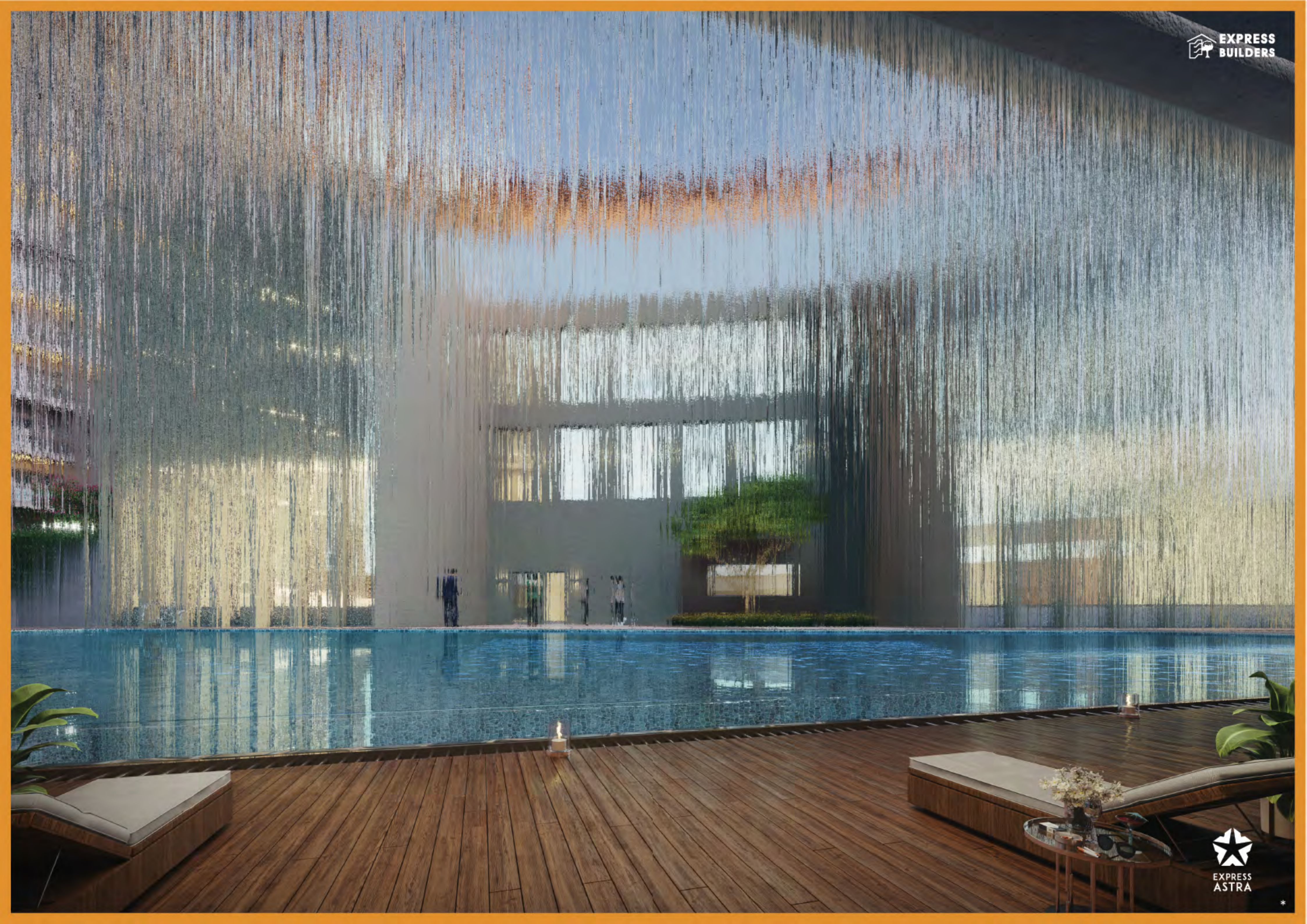
Swimming pool with separate pool for children

Cascading wall

Rain water harvesting











# *Fine*

discards darkness and welcomes light. Sunrays are the 'Light Of Life' filling everything with joy.

## *More Sunshine*

With sunlit homes, reduce your power consumption and welcome the sunrays each morning with open arms. The natural sunlight promotes a healthy living environment, which is rare to find in the compact homes of urban settlements.

Sunlit apartments for healthy living.

---

Enjoy winter sun

---

Gold rated green building







# *Air*

is symbolic to the liveners that stimulates our consciousness to enkindle our mind, body and soul.

## *More Ventilation*

At Astra, your home is designed to facilitate ample ventilation, which is crucial for a fresh and clean environment. Move to a ventilated space that promotes health and well-being, and ditch the compact urbane life.

Ventilated interiors for a healthy environment

Large glass windows

Airy rooms







# Space

is symbolic of peace and freedom. It is necessary to live a quality life.

## More Capaciousness

Living in a neighborhood that allows you the space to move freely is truly a blessing. Express Astra will offer just this, away from the hustle and bustle yet close to the city; come home to spaciousness and let the child in you - Out.

Designated hangout spots

Only 2/4 flats on each floor in every tower

Kids play area with separate TOT LOT

Jogging track

Corner plot with wide approachable roads











CLUB  
**KOSHA**

40,000 SQ. FT.

Just like the five Kosha's that encapsulate our existence, our residential club is built to facilitate perfect harmony of the five basic elements to lead an incredible life. It is an amalgamation of bliss, activity, wellness, comfort, and joy.





Euphoria Of Life

Our clubhouse brings you close to life's euphoria with amenities that make living at home more enjoyable than ever; while our Baoli and Prayer Area within the premises add life to every celebration and festival.

-  State-of-the-art Gymnasium
-  Temple
-  Steam/Sauna
-  Baoli
-  Dance & Zumba Room
-  Jogging Track
-  Mini Movie Screening Hall
-  TT Tables In Each Tower
-  Cricket Net Practice
-  Banquet Hall
-  Badminton Courts  
(Indoor & Outdoor)
-  Multipurpose Room
-  Lawn Tennis
-  Swimming Pool  
(Separate Kids Pool)
-  E-Gaming
-  Indoor Games  
(Chess, Carrom)
-  Yoga Room
-  Pool Table
-  Space For Restaurant/Coffee  
& Tea Lounge
-  Guest Rooms
-  Kids Play Area  
(Swings, Slides etc.)
-  Card Room
-  Indoor TOT LOT





SITE PLAN

**LEGENDS**

- 01 Vehicular Entry To Housing
- 02 Gaurd Hut
- 03 Pedestrian Entry For Housing
- 04 Vehicular Exit
- 05 Bond Street
- 06 Pedestrian Plaza
- 07 Public Entry To Bond Street
- 08 Security Gate
- 09 Outdoor Badminton Court
- 10 Cricket Pitch
- 11 Lawn Tennis Court
- 12 Lawn
- 13 Signature Orchard with seating
- 14 Pedestrian pathway
- 15 Feature wall
- 16 Temple
- 17 Sacred portal
- 19 Baoli
- 20 Hedge
- 21 Pavillion
- 22 Cascade feature
- 23 Hangout spot
- 24 Grand staircase
- 25 Swimming pool
- 26 Kids swimming pool
- 27 Pool Deck
- 28 Club
- 29 Drop off
- 30 Cul-de-sac
- 31 Interactive spaces
- 32 Parking
- 33 Jogging track

- 2 BR + TOILET
- 3 BR + 2 TOILET (SMALL)
- 3 BR + 2 TOILET
- 3 BR + 3 TOILET + POWDER ROOM
- 4 BR + 4 TOILET + PUJA SPACE\*





The  
*Diadem*  
of Astra

Exclusivity is the best luxury for people who only believe in getting the best. At Tower (J), life oozes opulence and exuberance from every inch. With only two flats per floor, get ready to live a peaceful life that's far away from being crowded. Enjoy a homogeneous living that's built for those with a premium taste.

G+26 Floors

Only 53 Exclusive Air Conditioned Apartments

2 Apartments on Each Floor

4 BHK + 4 Toilet + Puja Space

3 Spacious Decorative Lifts

Super Premium Specifications

14 Ft. High Entrance Lobby

40000 sq. ft. Clubhouse



TOWER  
J





# Specifications



## STRUCTURE

- Earthquake resistant R.C.C frame structure using Aluminium Shuttering.



## FLOORING

- Drawing / Dining & Kitchen: Premium Quality Imported Marble
- Master Bedroom: Laminated Wooden Flooring ( Brand: Vista / Action Tesa or equivalent )
- Bedrooms: Vitrified Tiles ( 800 mm x 800 mm ) ( Brand: Kajaria / Smpolo / Orient or equivalent )
- Bathrooms & Balconies: Anti Skid Tiles ( Brand: Kajaria / Smpolo / Orient or equivalent )



## ELECTRICAL

- Modular Switches, Sufficient Light and Power points ( Brands: Havells / Honeywell / Schnider / Goldmedal or equivalent )
- Copper Wires in concealed PVC conduits. ( Brand: Poly Cab / Havells / Goldmedal / Bonton / RR Cables or equivalent )
- 100% power back-up in common areas



## TOWER LOBBY

- 14 feet high with high end Specification



## DOORS & WINDOWS

- Main Entrance Door: Beautifully designed aesthetic Engineered Wood Door ( Brand: Spacewood or equivalent )
- Main Door with Digital lock ( Brand: Dorset / Yale / Godrej or equivalent )
- All other doors shall be duly painted / laminated
- All windows of UPVC / Aluminium



## KITCHEN

- Polished granite Kitchen Counter
- Ceramic glazed tiles dado upto 2 feet height upon kitchen counter ( Size: 4 ft x 2 ft )
- Stainless Steel double bowl sink with drain board



## INTERNAL & EXTERNAL FINISH

- Plastic emulsion in pastel shades on inner walls
- POP punning / Putty on walls in drawing, dining and bedrooms ( Brand : Berger / Asian or Equivalent )



## TOILETS

- Provision of hot and cold water supply in all toilets
- Ceramic glazed tiles dado up to 8 feet height ( Size: 4ft x 2ft )
- Washbasins, Wall Mounted EWC in white color
- Taps and fittings in CP ( Brand: Kohler / Jaquar / Hindware / Cera or equivalent )
- Motion Sensor Lights in all toilets
- Frameless fixed glass Shower Screen with SS fittings in Master Bathroom



## LIFTS

- 3 Spacious decorative lifts ( Brand: Otis or equivalent )



## AUTOMATION

- Smart Switches in Drawing / Dining / Master Bedroom

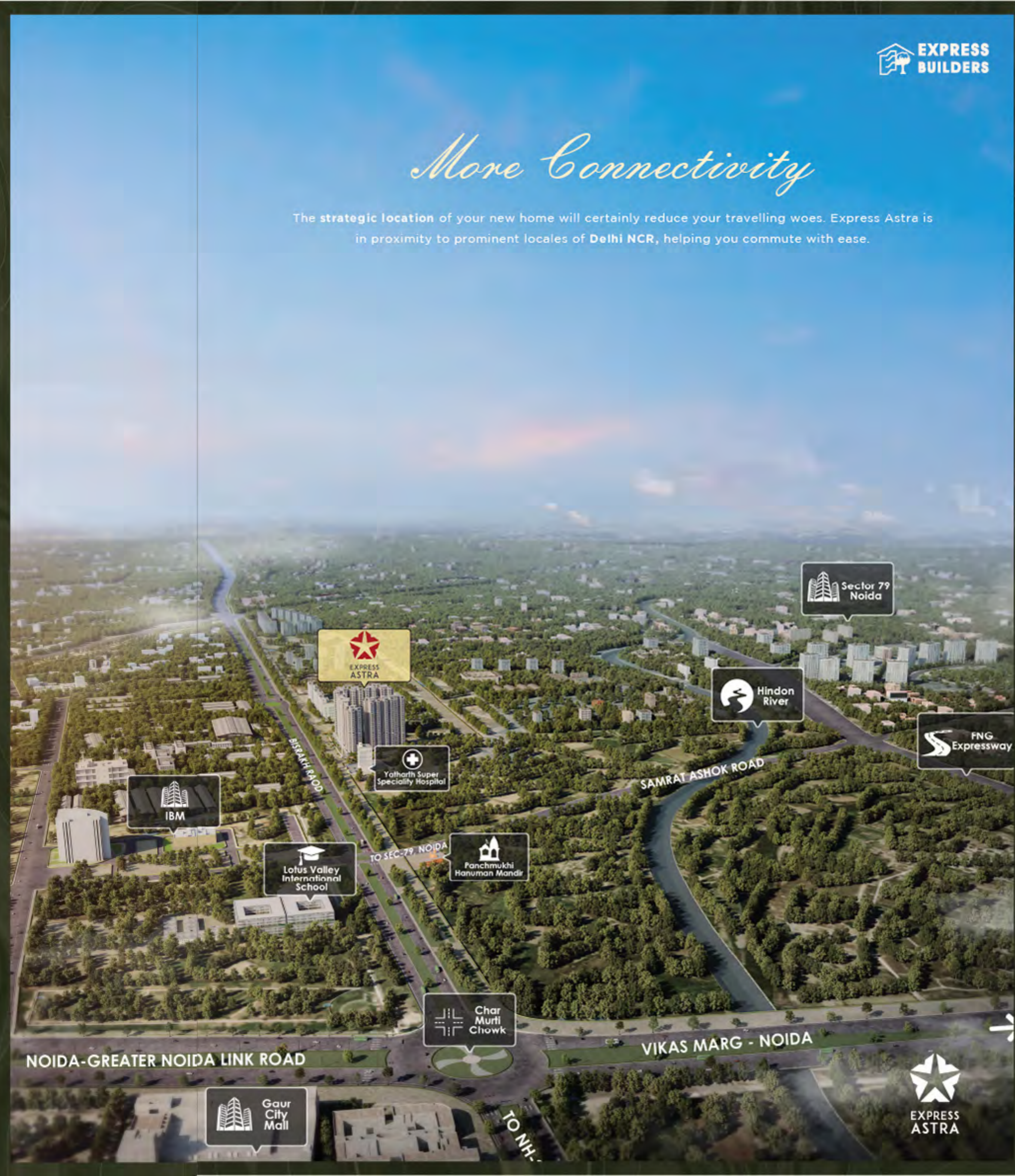


## AIR CONDITIONING

- Split air conditioners in Drawing / Dining / Bedrooms ( Brand: Daikin / Panasonic / Samsung / LG / Voltas / Blue Star or equivalent )

# More Connectivity

The strategic location of your new home will certainly reduce your travelling woes. Express Astra is in proximity to prominent locales of Delhi NCR, helping you commute with ease.





**ROAD FACING\***

4 BEDROOM + 4 TOILET + PUJA SPACE\*  
 SUPER AREA- 2650 SQ. FT.  
 RERA AREA-143.3 SQ. MTR.  
 BALCONY AREA- 37.5 SQ. MTR.



**PARK FACING\***

4 BEDROOM + 4 TOILET + PUJA SPACE\*  
 SUPER AREA- 2635 SQ. FT.  
 RERA AREA-141.8 SQ. MTR.  
 BALCONY AREA- 37.2 SQ. MTR.







**45+**  
*years of legacy*



## THE EXPRESS GROUP

When it comes to premium commercial and residential properties, Express Builders has been standing tall with a reputation unlike any in the league. With properties spread nationwide, we are striving to construct infrastructures with a promise of quality and commitment of a lifetime. With more than **70** projects delivered till date, we boast of an exemplary track record of 100% completion and satisfaction across the board. We have a wide footprint with prominent projects in cities such as Delhi, Noida, Ghaziabad, Sonipat, Bangalore and Hyderabad.

From on-time delivery to world-class architecture, we are moving towards the next level of enriching our legacy with Express Astra. The project boasts of exceptional features that can certainly fulfill the dreams of modern homebuyers.





# *Pan India Completed Projects*

**DELHI**

- AASHIRWAD ENCLAVE
- EXPRESS BUILDING
- EXPRESS MARKET – I
- EXPRESS MARKET –II
- EXPRESS MARKET – III
- EXPRESS PLAZA –I
- EXPRESS PLAZA –II
- EXPRESS TOWER

**NOIDA**

- EXPRESS ZENITH

**VAISHALI**

- EXPRESS APARTMENTS

**INDIRAPURAM**

- EXPRESS GARDEN
- EXPRESS MARKET

**MORADABAD**

- SUPER BAZAR

**SONIPAT**

- EXPRESS CITY
- EXPRESS HOMZ
- EXPRESS ROYAL

**HYDERABAD**

- EXPRESS APARTMENTS

**BANGALORE**

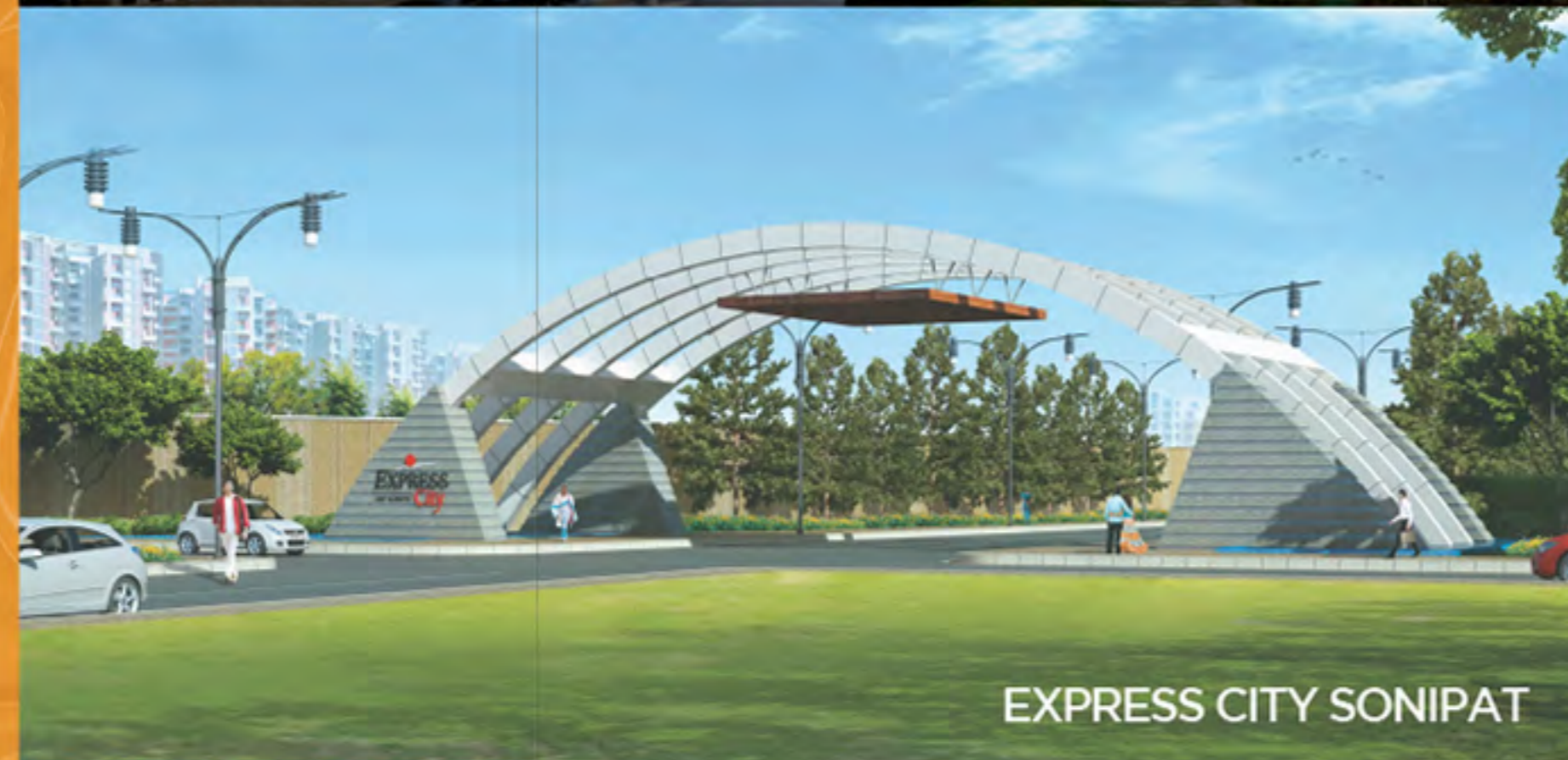
- DAFFODILS
- EXPRESS APARTMENTS
- EXPRESS ELEGANCE
- EXPRESS HOUSE
- EXPRESS NEW CITY
- EXPRESS RESIDENCY
- GITANJALI APARTMENTS
- GITANJALI CORNER
- GITANJALI LAYOUT
- PALM COURT



**EXPRESS ONE  
VASUNDHARA**



**EXPRESS ZENITH  
NOIDA**



**EXPRESS CITY SONIPAT**

# *Ongoing Projects*

**NOIDA**

- EXPRESS ASTRA
- EXPRESS ZENITH 2

**SONIPAT**

- EXPRESS ENCLAVE
- EXPRESS VILLAS

**VASUNDHARA**

- EXPRESS ONE





# Testimonials



★ I have pleasant experience with Express Builders. Good construction quality of Express Zenith Sector 77.

**- PRADEEP SANTDASANI**  
Express Zenith

★ Express Zenith society is quite good. Got timely delivery and all the paper work processed within time bound manner. Maintenance team is also very supportive. Happy with the overall deal.

**- AYUSHI SAND**  
Express Zenith

★ I am staying in Express Zenith for past more than one year. I am completely satisfied with the builder. Cleanliness is very good. Club has very good facilities. We are taking full advantage of the facilities.

**- ANIL JAIN**  
Express Zenith

★ I had an amazing experience while dealing with Express Builders. They deliver more than what they promise. I am very satisfied with their work and will advise the others to look forward to them.

**- RAMSHA ANWAR**  
Express City

★ I am more than satisfied with my experience with Express Builders. They stand by their commitments and their quality of work is commendable.

**- RITUL RASTOGI**  
Express Astra

★ Express Builders is a great name on which one can rely upon without any fear. My experience with Express Builders was awesome, and I look forward to be in touch with the company.

**- VASU SHARMA**  
Express One

★ My experience with Express Builders was great. A great company to deal with and will look forward to stay in touch with the company.

**- SHARANSH GUPTA**  
Express One

★ I have taken over keys of my flat. It gives me immense pleasure to be a part of the Express Family. Thanks to the Director and his team, without their support it was not possible to own such a flat built with best of material and specifications. Thanks to Express team for their support and advice, well done!

**- GARUDA DHWAJAN**  
Palm Court, Bangalore

★ Express Builders not only provide a place to live, it provides a better way of living with good quality of homes and services.

**- N.K SINGH**  
Daffodils, Bangalore

★ We have been dealt by staff of Express Builders very well with full support, transparency and friendly manner. Overall we are happy to be a part of Express Family.

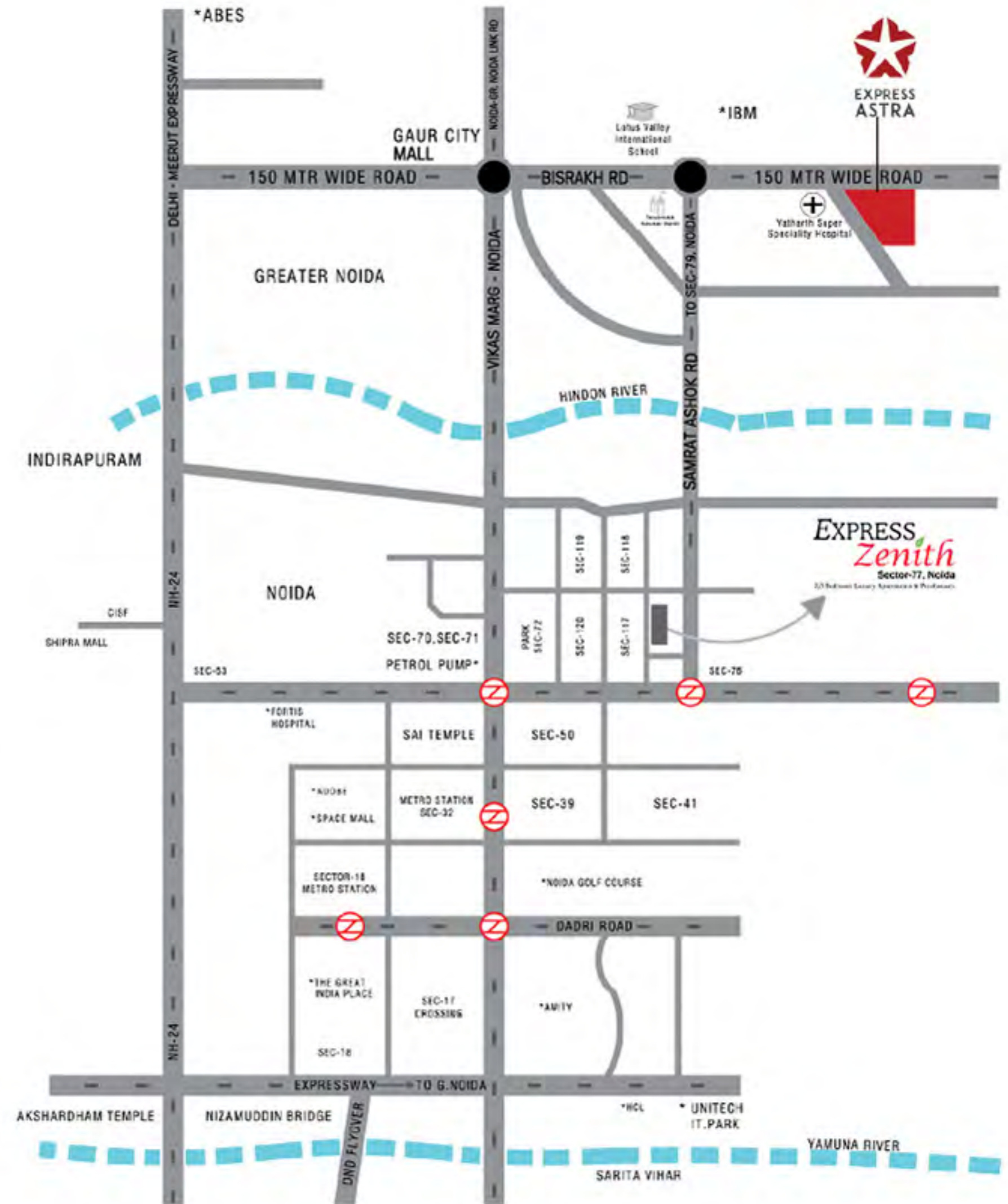
**- G. RANGANATHAN**  
Express Elegance, Bangalore

★ Got timely possession. Better than other builders of Delhi NCR.

**- SANTOSH KUMARI**  
Delhi

★ Had a good experience as a buyer for a 2 BHK flat in Express Zenith in Sector 77. The flat was nicely done, the handover process and possession was nicely managed on time and we had no issues at all in the paperwork and processing. The builder was fair in his pricing and we're generally pretty happy about our purchase.

**- PRINCE MATHEW**  
Express Zenith



## STRATEGIC LOCATION, COUNTLESS CONVENIENCES

- ★ Situated on 150m wide road Connecting Delhi Meerut Expressway to Greater Noida
- ★ Near FNG Corridor
- ★ Adjacent to Yatharth Hospital and Lotus Valley International school
- ★ Five minutes from major shopping malls
- ★ Five minutes from Delhi Meerut Expressway





SITE OFFICE: Plot No. GH-06A, Sector- 1, Greater Noida (West)  
HEAD OFFICE: H-139, Sector 63, Noida, Uttar Pradesh- 201301

Phase I - UP RERA Regn. Number UPRERAPRJ479698 | Website of UP RERA - [www.up-rera.in](http://www.up-rera.in)  
Phase II - UP RERA Regn. Number UPRERAPRJ229234 | Website of UP RERA - [www.up-rera.in](http://www.up-rera.in)

Disclaimer: Visual representations shown in this brochure are purely conceptual. All Building Plans, Specifications, Layout Plans etc. are tentative and subjects to variation & modification by the company or the competent authorities sanctioning plans. \* Computer generated image, indicative only.





EXPRESS  
ASTRA

There's **More** To Life









## EXPRESS ASTRA

---

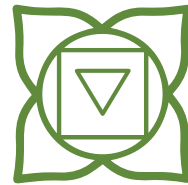
Life here is more than just about convenience and comfort; it is the ultimate bliss of living to the fullest. Express Astra is an epitome of good living where the elements of nature are perfectly amalgamated with Vastu Shastra.

Express Astra is a complete life experience. Here 'Panch Tattva - The Essence Of Life' forms the foundation of an incredible lifestyle. Together Earth, Water, Fire (Light), Air and Space are the foundations of living life full of joy and ecstasy. It offers everything you need to live, an elevated lifestyle, including ample greenery, good ventilation, beautiful water bodies, clean environment and abundant space.

With grand architecture and world-class facilities, living here will fill your life with freshness, vibrancy, prosperity, love and leisure.







***EARTH*** is the life bearer which represents a solid state - the soil, flora and fauna.

---

## MORE VERDURE

---

A harmonization of Nature and Modern Living, Express Astra boasts of beauty and bliss. The expanse of greenery in and around Express Astra enhances the living experience with fresh air.

**Vaastu compliant layout**

---

**Signature orchard with seating**

---

**Beautiful landscaped garden**

---

**75% open green area**

---

**Central landscaped greens  
with flower beds**







**WATER** is the driving force of nature. It has a purifying force which keeps us in spirit.

---

## MORE SPARKLE

---

Water is crucial for our existence, it is an everlasting source of inspiration to become versatile and fluid with limitless boundaries. Our Swimming Pool and Fountain add a sense of bliss to the landscape, whilst becoming a perfect escape spot from the mundane life in quest of joy.

**Swimming pool with separate pool for children**

---

**Cascading wall**

---

**Rain water harvesting**







***FIRE*** discards darkness and welcomes light. Sunrays are the 'Light Of Life' filling everything with joy.

---

## MORE SUNSHINE

---

With sunlit homes, reduce your power consumption and welcome the sunrays each morning with open arms. The natural sunlight promotes a healthy living environment, which is rare to find in the compact homes of urban settlements.

**Sunlit apartments for healthy living.**

---

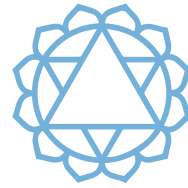
**Enjoy winter sun**

---

**Gold rated green building**







**AIR** is symbolic to the liveners that stimulates our consciousness to rekindle our mind, body and soul.

---

## MORE VENTILATION

---

At Astra, your home is designed to facilitate ample ventilation, which is crucial for a fresh and clean environment. Move to a ventilated space that promotes health and well-being, and ditch the compact urbane life.

**Ventilated interiors for a healthy environment**

---

**Large glass windows**

---

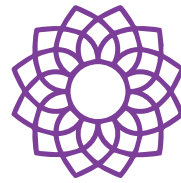
**Airy rooms**











**SPACE** is symbolic of peace and freedom. It is necessary to live a quality life.

---

## MORE CAPACIOUSNESS

---

Living in a neighborhood that allows you the space to move freely is truly a blessing. Express Astra will offer just this, away from the hustle and bustle. Come home to spaciousness and let the child in you - Out.

### **Designated hangout spots**

---

**Only 2/4 flats on each floor in every tower**

---

**Kids play area with separate TOT LOT**

---

**Jogging track**

---

**Corner plot with wide approachable roads**



EXPRESS  
ASTRA







# CLUB KOSHA

## 40,000 SQ. FT.

Just like the five Kosha's that encapsulate our existence, our residential club is built to facilitate perfect harmony of the five basic elements to lead an incredible life. It is an amalgamation of bliss, activity, wellness, comfort, and joy.





EXPRESS BUILDERS



EXPRESS  
ASTRA





CLUB  
**KOSHA**


### Euphoria Of Life

Our clubhouse brings you close to life's euphoria with amenities that make living at home more enjoyable than ever; while our Baoli and Prayer Area within the premises add life to every celebration and festival.

 **State-of-the-art Gymnasium**

 **Yoga Room**

 **Banquet Hall**

 **Steam/Sauna**

 **Space For Restaurant/Coffee & Tea Lounge**

 **Multipurpose Room**

 **Dance & Zumba Room**

 **Kids Play Area**  
(Swings, Slides etc.)

 **Swimming Pool**  
(Separate Kids Pool)

 **Mini Movie Screening Hall**

 **Indoor TOT LOT**

**Indoor Games**  
(Chess, Carrom)

 **Cricket Net Practice**

 **Temple**

 **Pool Table**

 **Badminton Courts**  
(Indoor & Outdoor)

 **Baoli**

 **Guest Rooms**

 **Lawn Tennis**

 **Jogging Track**

 **Card Room**

**E-Gaming**

**TT Tables In Each Tower**





SITE PLAN

LEGENDS

- 01 Vehicular Entry To Housing
- 02 Gaurd Hut
- 03 Pedestrian Entry For Housing
- 04 Vehicular Exit
- 05 Bond Street
- 06 Pedestrian Plaza
- 07 Public Entry To Bond Street
- 08 Security Gate
- 09 Outdoor Badminton Court
- 10 Cricket Pitch
- 11 Lawn Tennis Court
- 12 Lawn
- 13 Signature Orchard with seating
- 14 Pedestrian pathway
- 15 Feature wall
- 16 Temple
- 17 Sacred portal
- 18 Signature peepal tree
- 19 Baoli
- 20 Hedge
- 21 Pavillion
- 22 Cascade feature
- 23 Hangout spot
- 24 Grand staircase
- 25 Swimming pool
- 26 Kids swimming pool
- 27 Pool Deck
- 28 Club
- 29 Drop off
- 30 Cul-de-sac
- 31 Interactive spaces
- 32 Parking
- 33 Jogging track

- 2 BR + TOILET
- 3 BR + 2 TOILET (SMALL)
- 3 BR + 2 TOILET
- 3 BR + 3 TOILET + POWDER ROOM





## UNIT TYPE - 01

3 BEDROOM + 3 TOILET + POWDER ROOM

SUPER AREA- 2005 SQ. FT.

RERA AREA- 107.361 SQ. MTR.

BALCONY AREA- 30.114 SQ. MTR.







EXPRESS BUILDERS

## UNIT TYPE - 02

3 BEDROOM + 2 TOILET  
SUPER AREA- 1570 SQ. FT.  
RERA AREA- 87.893 SQ. MTR.  
BALCONY AREA- 16.288 SQ. MTR.



EXPRESS  
ASTRA



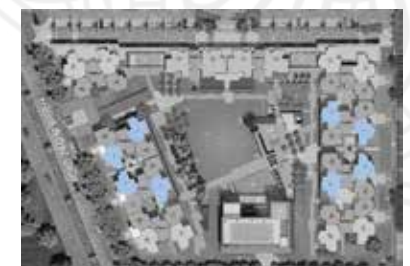
### UNIT TYPE - 03

3 BEDROOM + 2 TOILET (SMALL)

SUPER AREA- 1350 SQ. FT.

RERA AREA- 73.746 SQ. MTR.

BALCONY AREA- 15.426 SQ. MTR.







EXPRESS BUILDERS

### UNIT TYPE - 04

2 BEDROOM + 2 TOILET  
SUPER AREA- 1150 SQ. FT.  
RERA AREA- 64.213 SQ. MTR.  
BALCONY AREA- 12.088 SQ. MTR.



EXPRESS  
ASTRA



# SPECIFICATIONS



## STRUCTURE

- Earthquake resistant R.C.C. frame structure using Aluminum Shuttering.



## FLOORING

- Drawing/Dining/Bedroom & Kitchen: Vitrified Tiles.
- Master Bedroom: Laminated Wooden Flooring.
- Bathrooms & Balconies: Anti Skid Tiles.



## ELECTRICAL

- Modular switches, sufficient light and power points.
- Cable TV and telephone points in drawing room and master bedroom.
- Copper wires in concealed PVC conduits.
- 100% power back-up in common areas.



## TOWER LOBBY

- High end specs. in common areas.



## DOORS & WINDOWS

- UPVC/Aluminium windows.
- Main door: both side laminated door.
- All other doors shall be duly painted/laminated.



## KITCHEN

- Polished granite kitchen counter.
- Ceramic glazed tiles dado up to 2 feet height upon kitchen counter.
- Stainless steel sink with drain board.



## INTERNAL & EXTERNAL FINISH

- Oil bound distemper in pastel shades on inner walls.
- POP punning/Putty on walls in drawing, dining, and bedrooms.



## TOILETS

- Provision of hot and cold water supply in all toilets.
- Ceramic glazed tiles dado up to 7 feet height.
- White sanitary ware.



## LIFTS

- 2/3 Spacious decorative lifts in all towers.





# MORE CONNECTIVITY

The **strategic location** of your new home will certainly reduce your travelling woes. Express Astra is in proximity to prominent locales of **Delhi NCR**, helping you commute with ease.







EXPRESS BUILDERS

# 45 YEARS OF LEGACY

---

## THE EXPRESS GROUP

---

When it comes to premium commercial and residential properties, Express Builders has been standing tall with a reputation unlike any in the league. With properties spread nationwide, we are striving to construct infrastructure with a promise of quality and commitment of a lifetime. With more than **70** projects delivered till date, we boast of an exemplary track record of 100% completion and satisfaction across the board. We have a wide footprint with prominent projects in cities such as Delhi, Noida, Bangalore and Hyderabad.

From on-time delivery to world-class architecture, we are moving towards the next level of enriching our legacy with Express Astra. The project boasts of exceptional features that can certainly fulfill the dreams of modern homebuyers.







EXPRESS BUILDERS

## PAN INDIA COMPLETED PROJECTS

### DELHI

AASHIRWAD ENCLAVE

EXPRESS BUILDING

EXPRESS MARKET - I

EXPRESS MARKET -II

EXPRESS MARKET - III

EXPRESS PLAZA - I

EXPRESS PLAZA -II

EXPRESS TOWER

### NOIDA

EXPRESS ZENITH

### VAISHALI

EXPRESS APARTMENTS

### INDIRAPURAM

EXPRESS GARDEN

EXPRESS MARKET

### MORADABAD

SUPER BAZAR

### SONIPAT

EXPRESS CITY

EXPRESS HOMZ

EXPRESS ROYAL

### HYDERABAD

EXPRESS APARTMENTS

### BANGALORE

DAFFODILS

EXPRESS APARTMENTS

EXPRESS ELEGANCE

EXPRESS HOUSE

EXPRESS NEW CITY

EXPRESS RESIDENCY

GITANJALI APARTMENTS

GITANJALI CORNER

GITANJALI LAYOUT

PALM COURT

## ONGOING PROJECTS

### NOIDA

EXPRESS ASTRA

EXPRESS ZENITH 2

### SONIPAT

EXPRESS ENCLAVE

EXPRESS VILLAS

### VASUNDHARA

EXPRESS ONE



EXPRESS ONE  
VASUNDHARA



EXPRESS ZENITH  
NOIDA



EXPRESS CITY SONIPAT



EXPRESS  
ASTRA



# TESTIMONIALS



- ★ I have taken over keys of my flat. It gives me immense pleasure to be a part of the Express Family. Thanks to the Director and his team, without their support it was not possible to own such a flat built with best of material and specifications. Thanks to Express team for their support and advice, well done!

**- GARUDA DHWAJAN**  
*Palm Court, Bangalore*

- ★ Express Builders not only provide a place to live, it provides a better way of living with good quality of homes and services.

**- N.K SINGH**  
*Daffodils, Bangalore*

- ★ We have been dealt by staff of Express Builders very well with full support, transparency and friendly manner. Overall we are happy to be a part of Express Family.

**- G. RANGANATHAN**  
*Express Elegance, Bangalore*

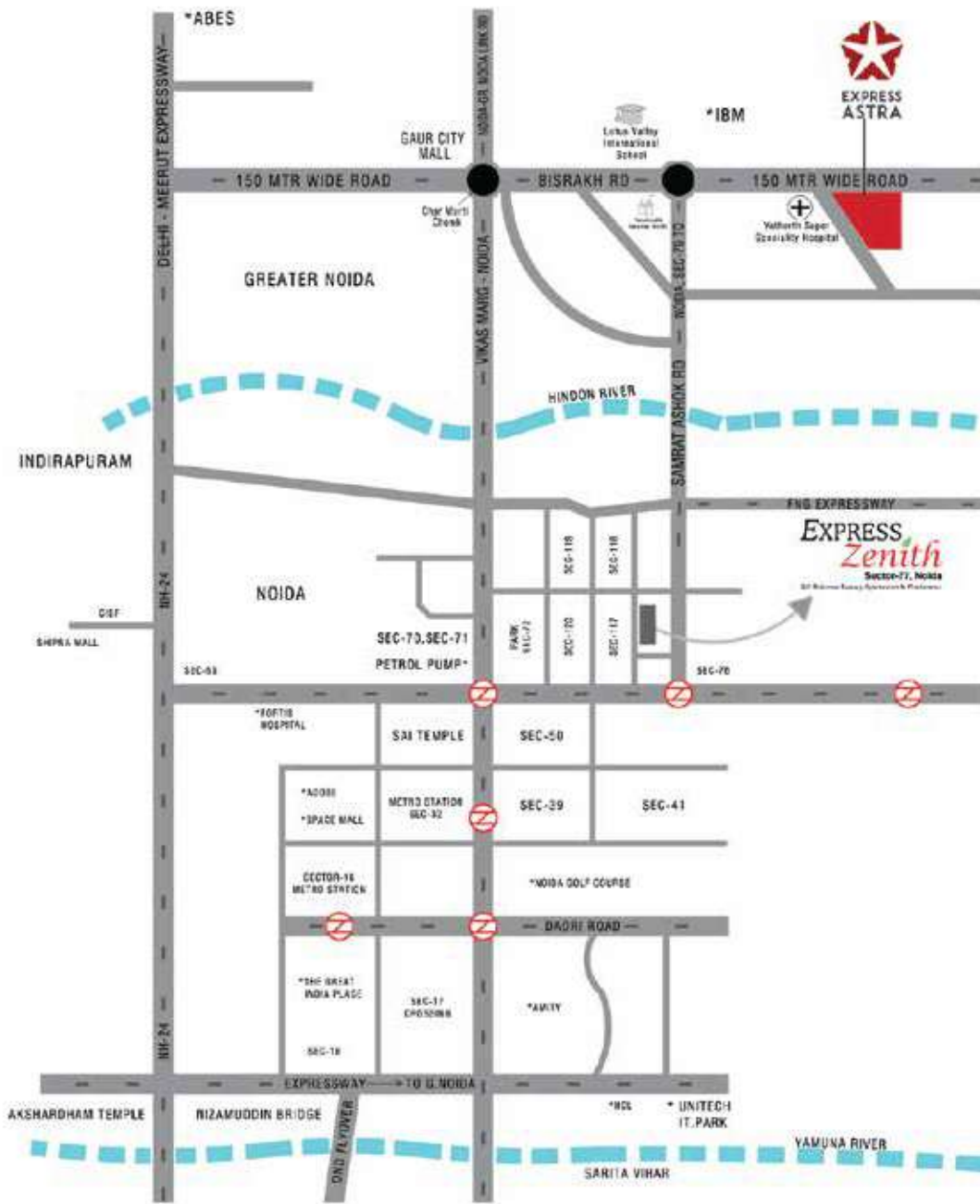
- ★ Got timely possession. Better than other builders of Delhi NCR.

**- SANTOSH KUMARI**  
*Delhi*



## Strategic Location, Countless Conveniences

- ★ Situated on 150m wide road Connecting Delhi Meerut Expressway to Greater Noida
- ★ Near FNG Corridor
- ★ Adjacent to Yatharth Hospital and Lotus Valley International school
- ★ Five minutes from major shopping malls
- ★ Five minutes from Delhi Meerut Expressway



**EXPRESS BUILDERS**

**SITE OFFICE:** Plot No. GH-06A, Sector- 1, Greater Noida (West)

**HEAD OFFICE:** H-139, Sector 63, Noida, Uttar Pradesh- 201301

**W |** [www.expressbuildersltd.com](http://www.expressbuildersltd.com)

**UP RERA Regn. Number** UPRERAPRJ479698 | **Website of UP RERA -** [www.up-rera.in](http://www.up-rera.in)